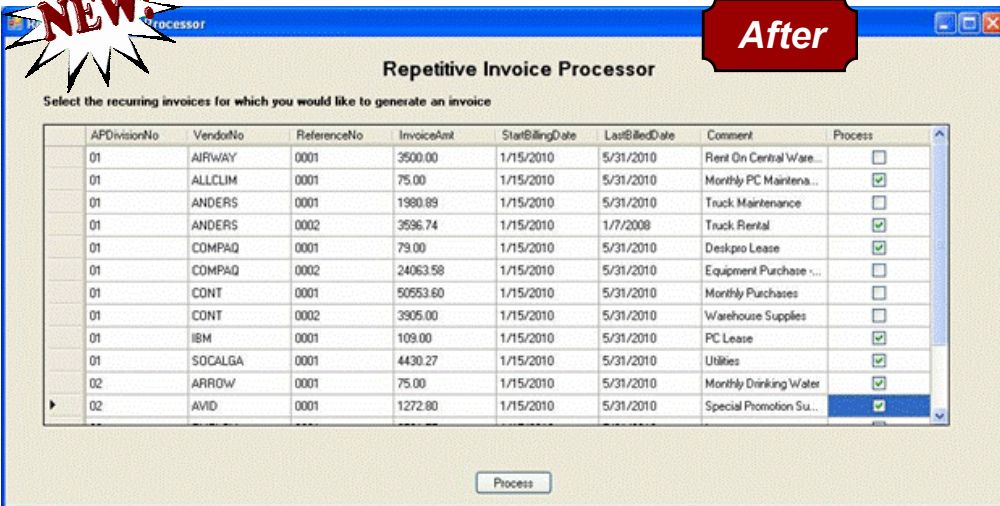
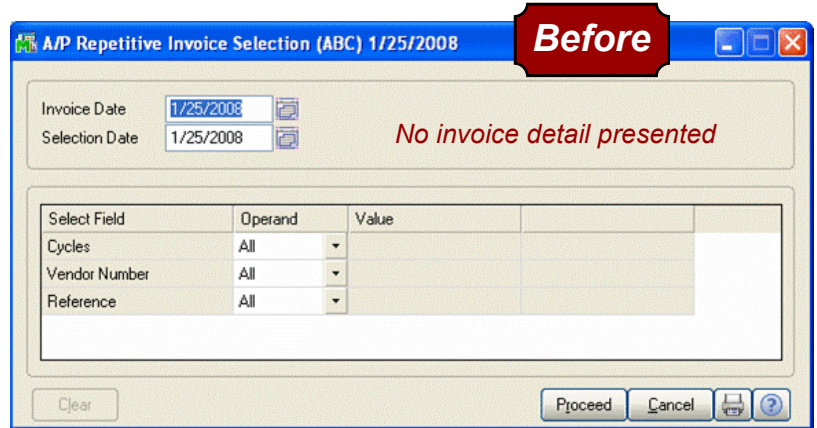




MAS 90 MAS 200 **AP REPETITIVE INVOICE PROCESSOR**

Selecting repetitive invoices in standard MAS 90 or MAS 200 AP is cumbersome and prone to human error. Many clients choose to manually enter their rent, phone, utility, and other regular monthly bills because using this feature is so difficult. Take a look at the existing screen in version 4.20 (prior versions are similar). Note that you can select by cycle, vendor number, and/or reference but no helpful information is shown to assist your selection. Note that it is also difficult to select a single invoice for processing.



Now look at the new **PAS AP Repetitive Invoice Processor**. All important fields are displayed for the user's reference and each invoice may be selected individually. The list may be re-sorted in any sequence by clicking on the column heading. You can easily see if the invoice has been previously processed, and after processing the invoice will be removed from the window to prevent duplicate selection.

This enhancement also enables users to setup invoice templates for vendors with a set of multiple GL accounts. Each GL account can be entered with a zero dollar amount and edited after processing.

After invoices are selected, the user will be prompted for an invoice date (the default is the current system date). The invoices are then created in invoice data entry and may be modified as per normal MAS processing before update.

The enhancement requires using version 4.20 of MAS 90 or MAS 200 and the Business Objects Interface module which can be obtained at no charge until version 4.30 is released. Please contact PAS today to take advantage of this exciting new feature.

**Price:** \$495 plus \$100 Annual Maintenance  
Product No. PASCAP008